



A message from Technical Standards



CitiPower/Powercor Technical Standards Update for September 2020

Please ensure that this information is passed on to all employees and contractors with in your organisation.

The following updates are relevant to all technical, field employees and contractors undertaking design, construction and maintenance activities on the CitiPower and Powercor networks.

Technical Standards are available on our [website](#).

All new design and construction proposals commenced after the **09 November 2020** are required to comply with these updates.

If you have further questions, please contact the relevant team member associated with the published documents.

<i>Standard Category</i>	<i>Technical Standard</i>	<i>Description</i>	<i>Overview</i>	<i>Impacted Key Stakeholder(s)</i>
E - Overhead	EB001	Distribution Construction Standard - Poles - General Information	Standards updated to include step bolt inserts for all 12.5m & 14m concrete poles. Contact: Darren Martini (03) 9683 4738	DESIGN CONSTRUCTION MAINTENANCE
	EB041	Distribution Construction Standard - Poles - Concrete		
	EB406	Distribution Construction Standard - Pole Assembly - Concrete		
	EB601-841	Distribution Material Standard - Poles - Accessories		
G - Underground	GL041	Distribution Construction Standard - Kiosk Substations - Cable Entry, Foundations and Civil Works	Standards updated to replace the use of fibre cement covers with new PVC covers on the kiosk box foundation. Contact: Darren Martini (03) 9683 4738	DESIGN CONSTRUCTION MAINTENANCE
	GL501-711	Distribution Material Standard - Kiosk Substations		

LEGEND
HIGH IMPACT
MEDIUM IMPACT
LOW IMPACT

EB Poles – Concrete Poles - EB001, EB041, EB406, EB606 & EB786

Key changes*

Release date: 09 October 2020

**Please refer to official standard for details*

What has changed?:

- Technical Standard series EB has been updated to include step bolt inserts for all 12.5m & 14m concrete poles.
- While the step bolt inserts will be provided on the poles, the associated step bolts will not be supplied with the 12.5m & 14m concrete poles, but can be ordered as required via Technical Standards EB786.

Why?:

- Previously step bolt inserts were only included on 15m concrete poles and above.
- However with the increase use of concrete poles in southern depots, the need for steps bolts on shorter poles is required for situations where EPV access is not available, especially in winter months.
- In these situations where ladders are required for working aloft, step bolts are now an option.



Figure 1 – Step bolt

GL041 & GL662 - Kiosk box foundation covers

Key changes*

Release date: 09 October 2020

**Please refer to official standard for details*

What has changed?:

- Technical Standards GL041 & GL662 have been updated to include new hardened PVC covers for the front & rear openings of the kiosk box foundation.
- The box foundation will now be supplied with 4 x grey PVC covers, 840mm(h) X 1290mm(w) X 12mm(t) and M10 x 70mm galvanised steel Ramset-DynaBolts to attach the covers to the foundation.
- Similar to the previous covers, the new PVC covers may be drilled out to enable cables to be run through the box foundation.
- Technical Standard GL041 has also been updated to provide further guidance on the earthing requirements for the foundation.

Why?:

- Field feedback has advised that some of the existing fibre cement covers have been breaking. Therefore a more durable plastic cover has been developed.

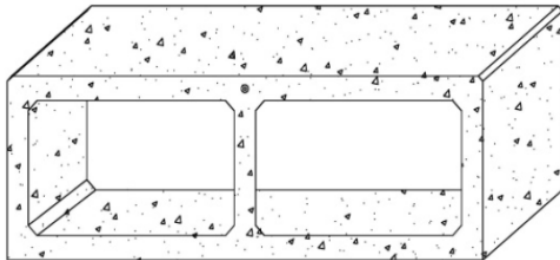


Figure 1 - Kiosk box foundation

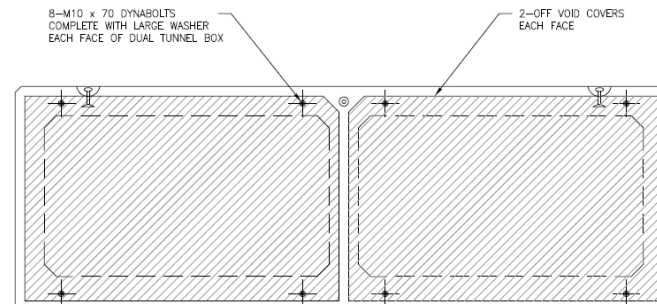


Figure 2 - Kiosk box foundation with covers